



Show & Tell

July 2020

CODE OF CONDUCT

Our guild offers a safe and welcoming environment to listen, learn, and share ideas. To this end, we ask participants to not operate a motor vehicle while attending our guild meetings and events remotely via Zoom.

Contributors

- Carol Wood
- Charlene Marietti
- Evelyn Ray
- Gail Gondek
- Gigi Matthews
- Hedy Lyles
- Katy Clements
- Nancy Everham
- Ria Koopsman
- Sally Orgren
- Tara Weinstein
- Terry Henley
- Vicki Aspenberg

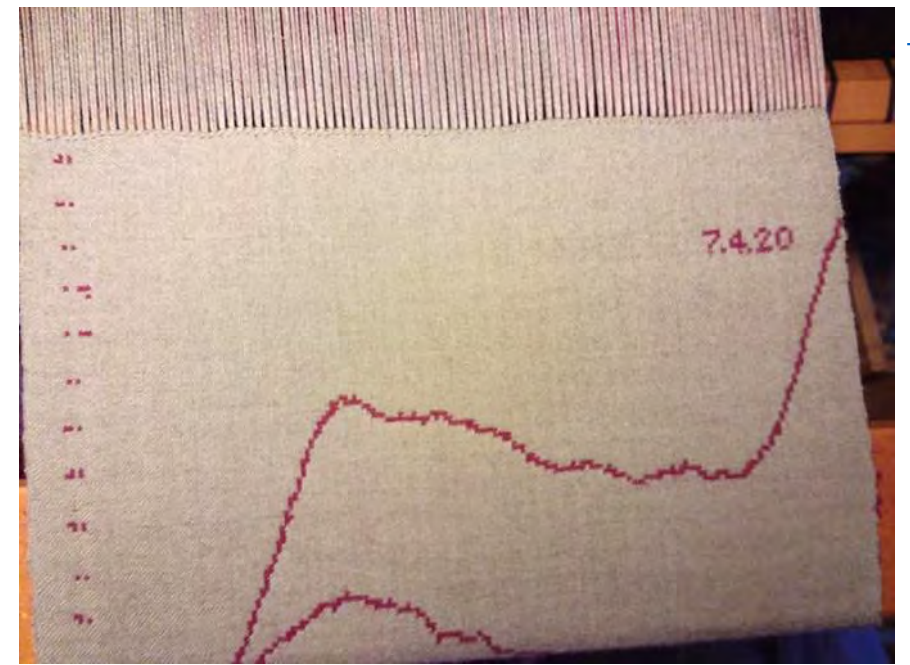
Gail Gondek



Carol Wood



Carol Wood



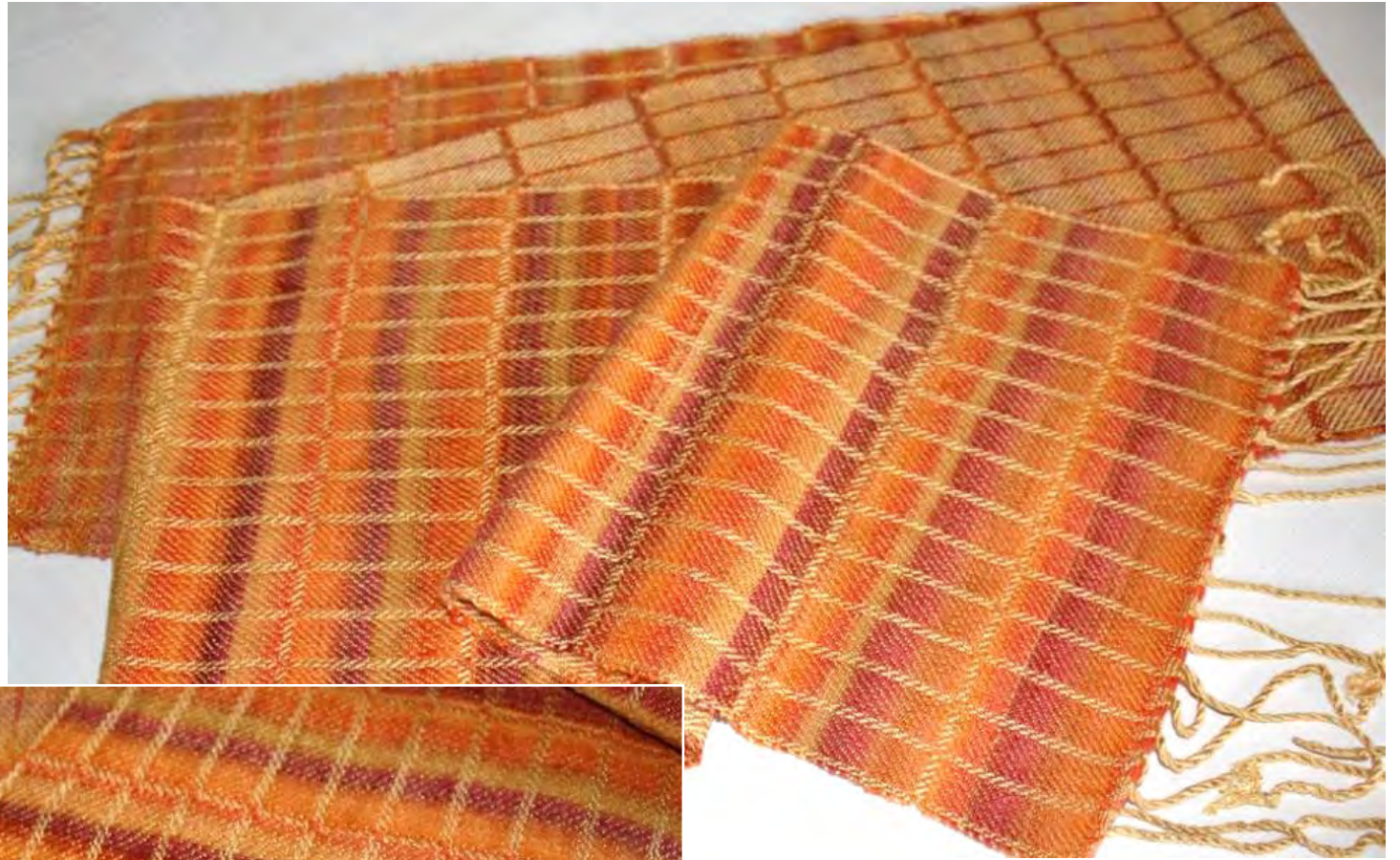
Evelyn Ray

I am a beginner and have been enjoying the journey. I love working small and I use some of the weaves as art forms in mixed media too.



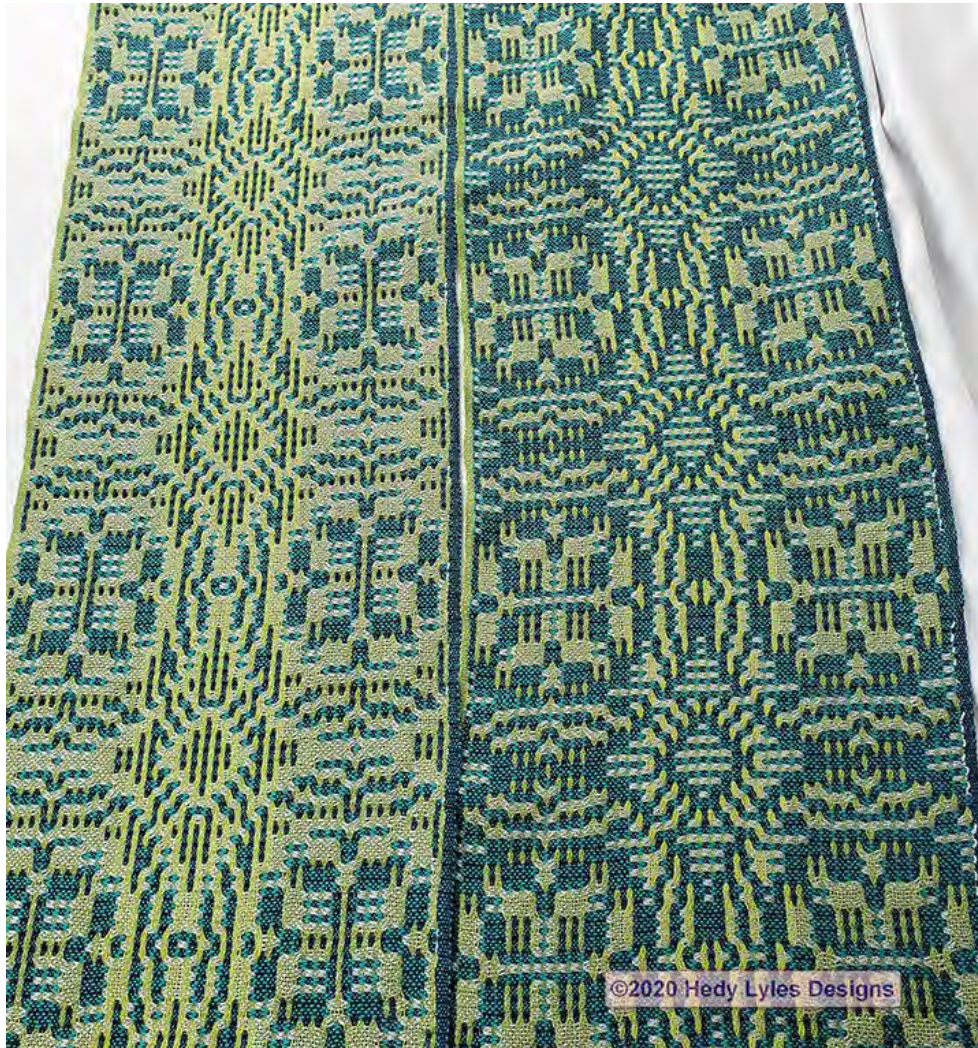
Terry Henley

Challenge Group



Hedy Lyles

Deflected Doubleweave



Sally Orgren

Ruins III: Bears Ears

This was the third piece woven in the *Spiral 2.0* series



Structure: 2-Tie, 10 pattern shafts.
Spiral borders = S&W treadling, Center motif of pottery shard pattern = pick up. 30 epi.

Fibers: Linen warp, wool and linen weft

Sally Orgren

Patio Chair Cushions



Structure: 4-shaft plain weave, with twill treadingling option. 12 epi.

Fibers: Warp - 6 colors of Dazzle Twine (Home Depot):

Weft - Dazzle twine and hand-spun plarn, made from recycled blue and red newspaper sleeves and purple dollar store plastic tablecloths.



Vicki Aspenberg

Ebony Jewelwing



Tara Weinstein



Ria Koopsman



Katy Clements



Katy Clements



Katy Clements



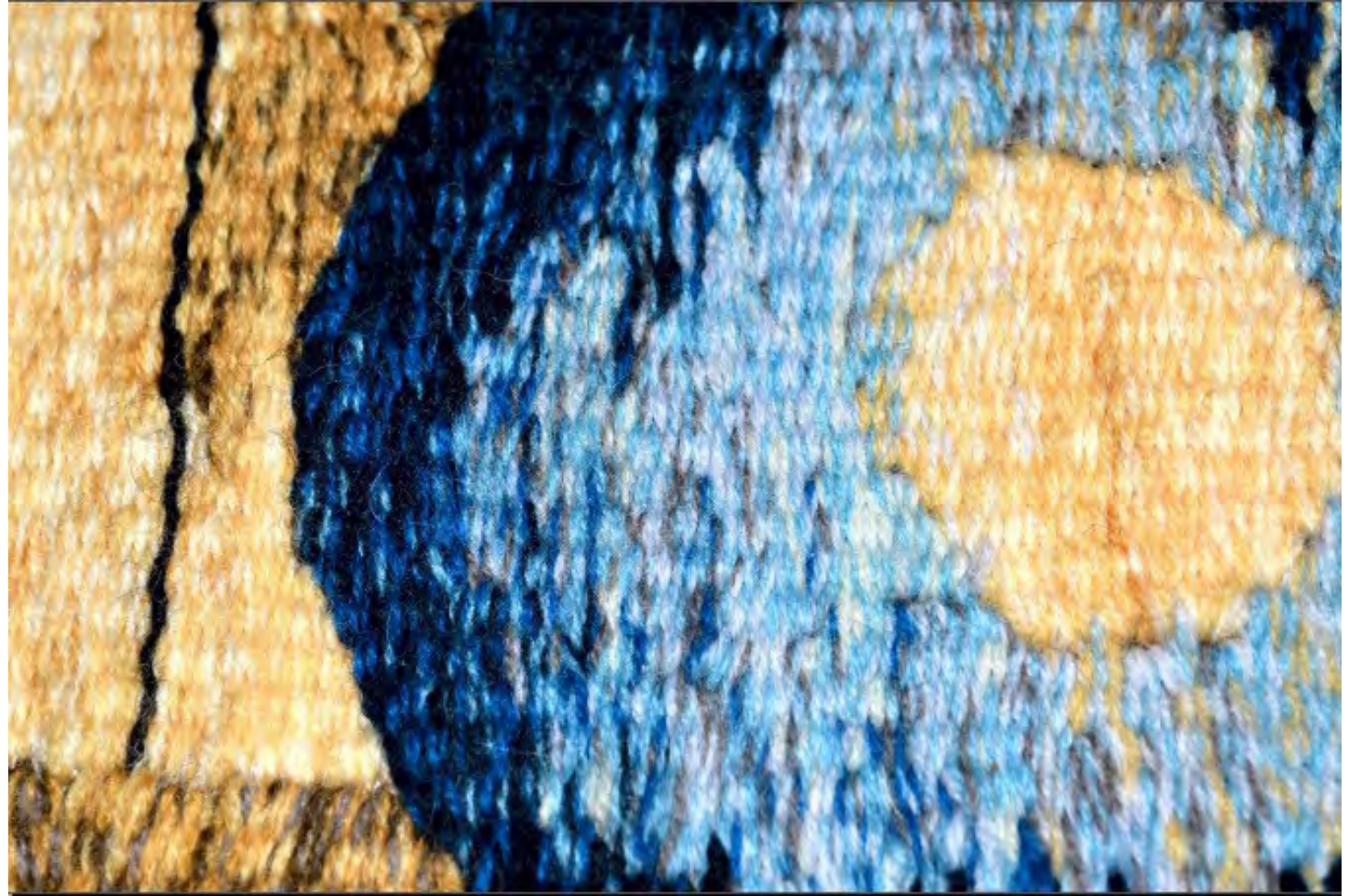
Katy Clements



Gigi Matthews



Nancy Everham

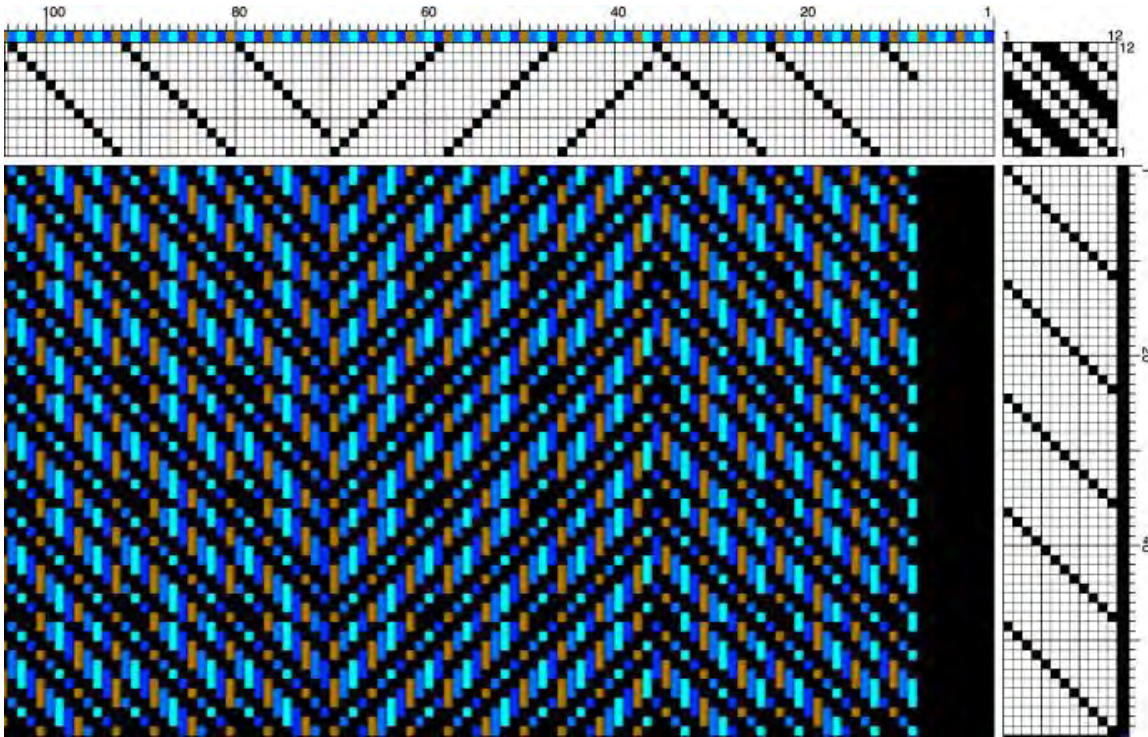


Nancy Everham



Charlene Marietti

Two Scarves, Two Challenges



Challenge 1: a beautiful multi-color Tencel yarn

12 shafts

Structure: Twill, simple weave

Straight twill treadling

Warp: 8/2 Tencel, multicolored

Weft: 8/2 Tencel, black



Charlene Marietti



Close-up



Charlene Marietti

Challenge 2:

Historic structure with very fine threads

Dimity weave

8 shaft

Plain, compound weave with plain and twill structures

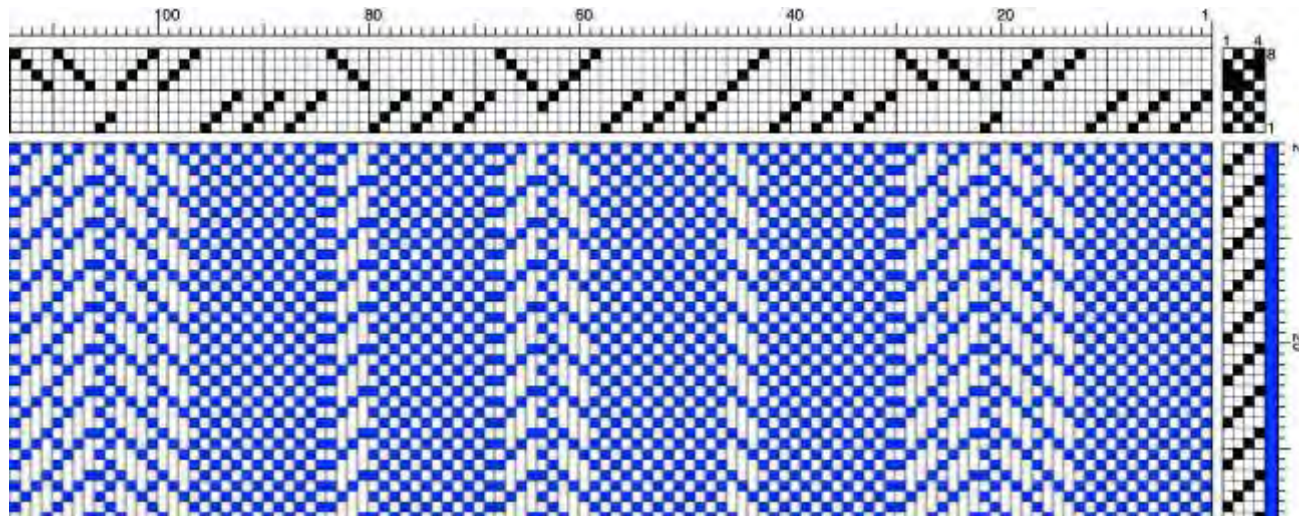
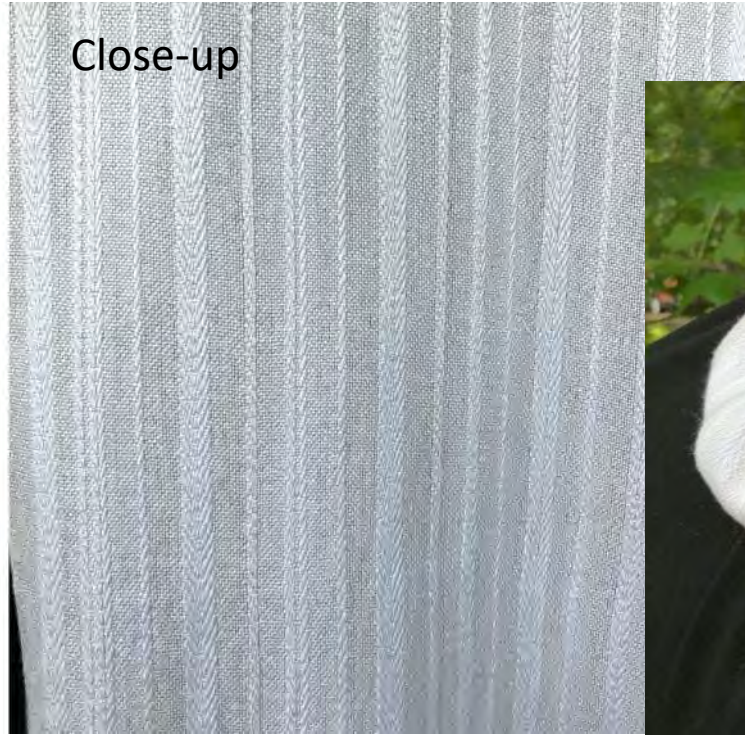
Shafts 1-4: Plain, balanced weave

Shafts 5-8: Twill

Warp: Silk City Fibers Bambu, 12GG (6,300 ypp) Rice

Weft: SCF Bambu, ~12,000 ypp. very pale pink

Close-up





Show & Tell

Aug 2020

CODE OF CONDUCT

Our guild offers a safe and welcoming environment to listen, learn, and share ideas. To this end, we ask participants to not operate a motor vehicle while attending our guild meetings and events remotely via Zoom.

Contributors

- Carol Wood
- Charlene Marietti
- Hedy Lyles
- Judy Lambert
- Kate OHara
- Katy Clements
- Kristina Karpinski
- Lynn Yu
- Lynne Cowe Falls
- Michele Burke
- Sally Orgren
- Tara Weinstein
- Terry Henley
- Vicki Aspenberg

Carol Wood

8/2 cotton dyed with

Blue: indigo

Gold: sumac, alum, chalk, onion skins

Green: myrobalans, indigo

Small sample in plain weave

2nd pic is the photo I'm inspired by -
vintage Japanese futon cover fabric,
appears to be silk

Learned, so far, that my knowledge of
natural dyeing on wool & silk does not
help me very much when I try to get color
on cotton.



Charlene Marietti

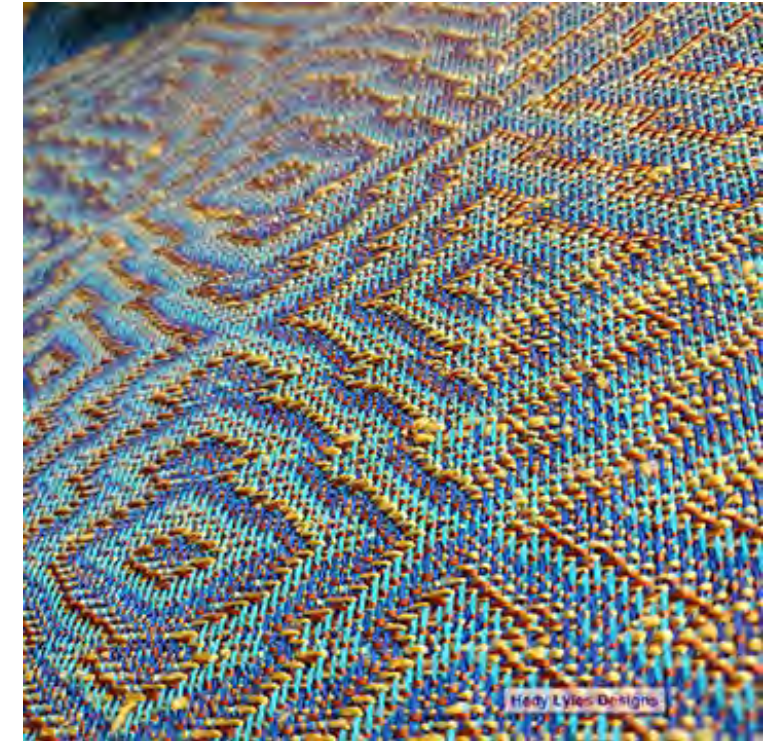
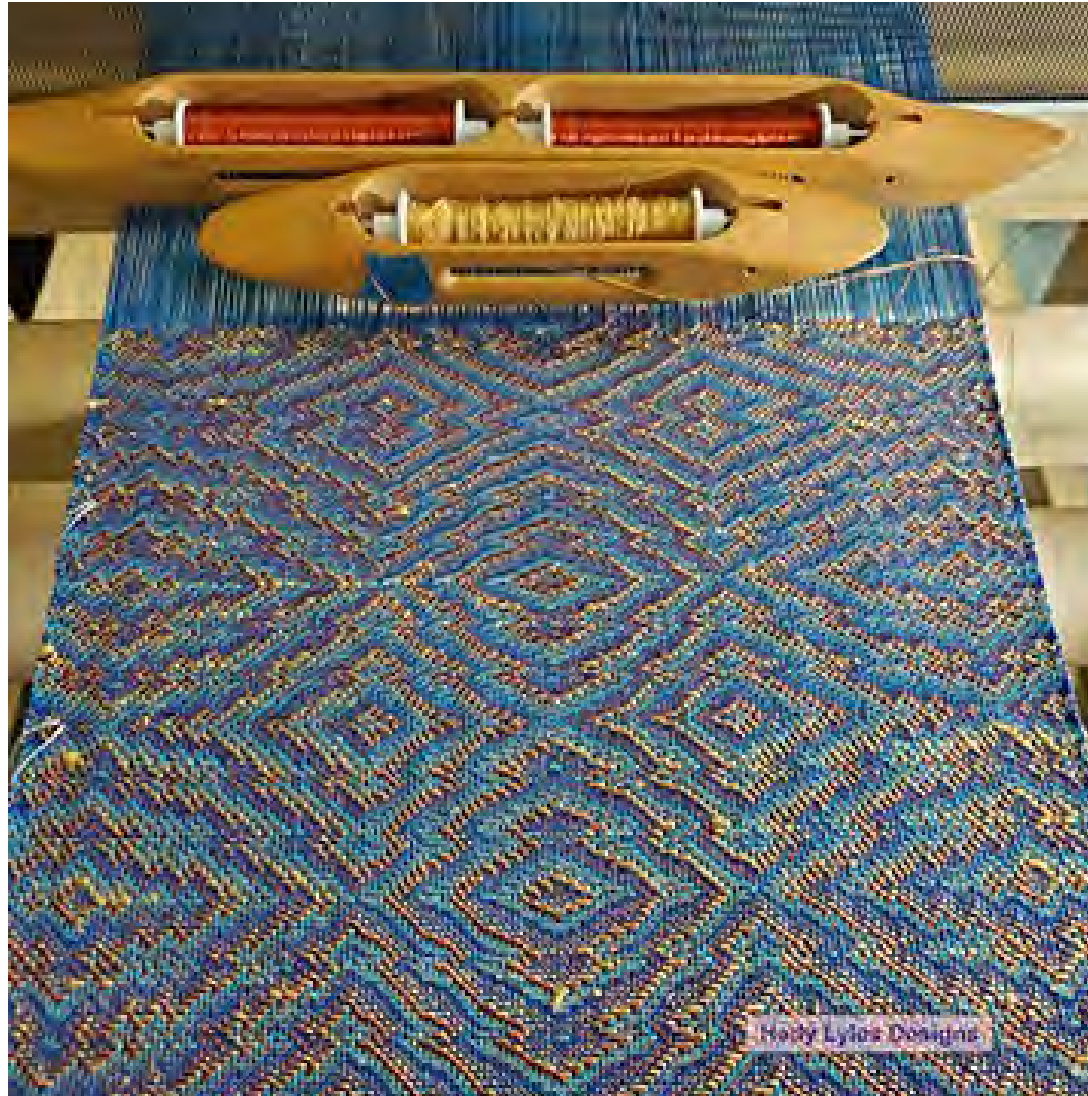
Deflected Doubleweave Stole



Hedy Lyles

A friend gave me these bobbins full of silks that she brought back from Thailand. She said this about the silks-

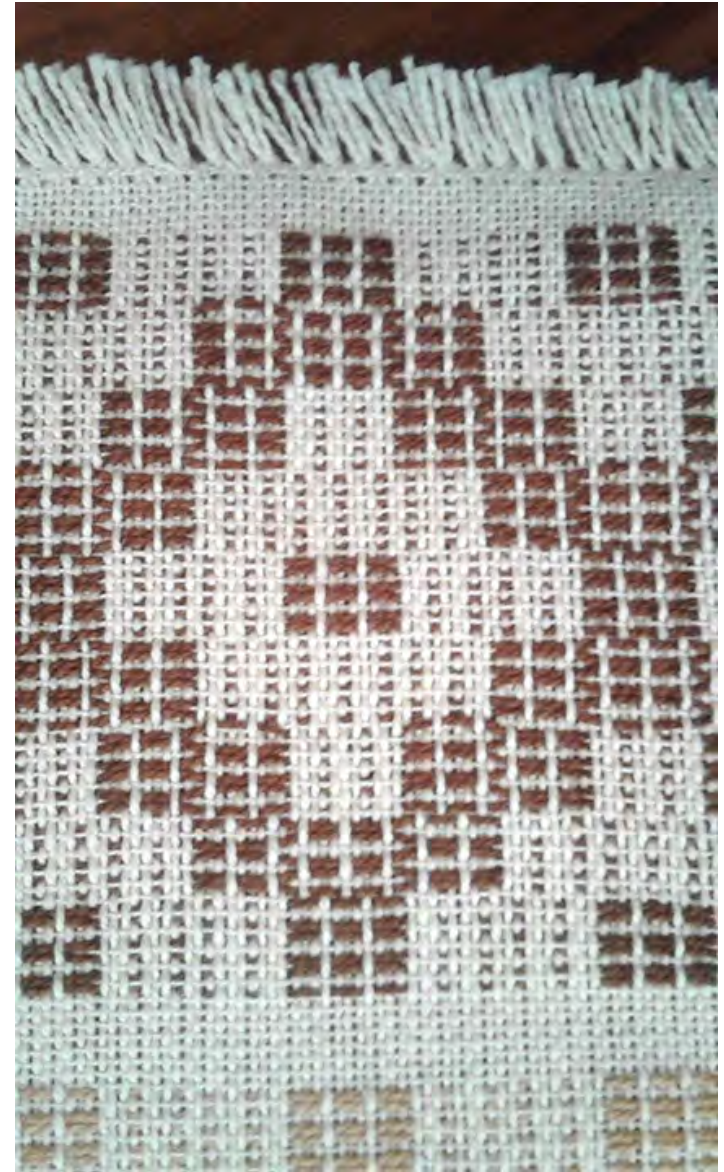
The copper is classic Thai silk and is like the royals wore/wear. The other is very rustic and is valuable because not everyone can afford silk, still, it is not as refined.



My warp is Royal and Aquamarine tencel.
Design is Corris II from an online course that I just completed from Margaret Coe.
24 shaft pattern.

Judy Lambert

Crackle Weave Towel



Kate OHara

I take photos and
interpret them in my
weaving.



Kate OHara

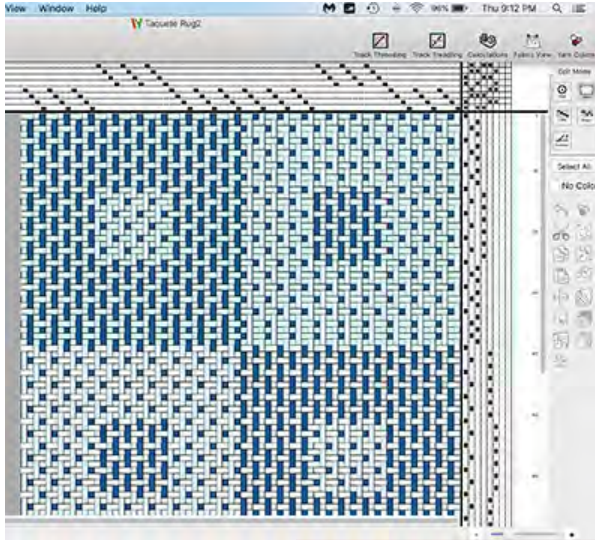


I take photos and interpret them in my weaving.



Katy Clements

Taquete Rugs



Katy Clements



Kristina Karpinski



Plain weave/twill Scarf
Handwoven 2020 linen



Rosepath Scarf in 8/2 and 5/2
cotton



Spider Weave Scarf Handwoven 2020 wool

Kristina Karpinski



Crackle Weave Kitchen Towels 8/2 and 8/4 cotton Jane Stafford Textiles



Summer and Winter Kitchen Towels 8/2 and 8/4 cotton Pine Peak Weavers Guild 2014



Summer and Winter 10/2 and 5/2 cotton Carol Stickler

Lynn Yu

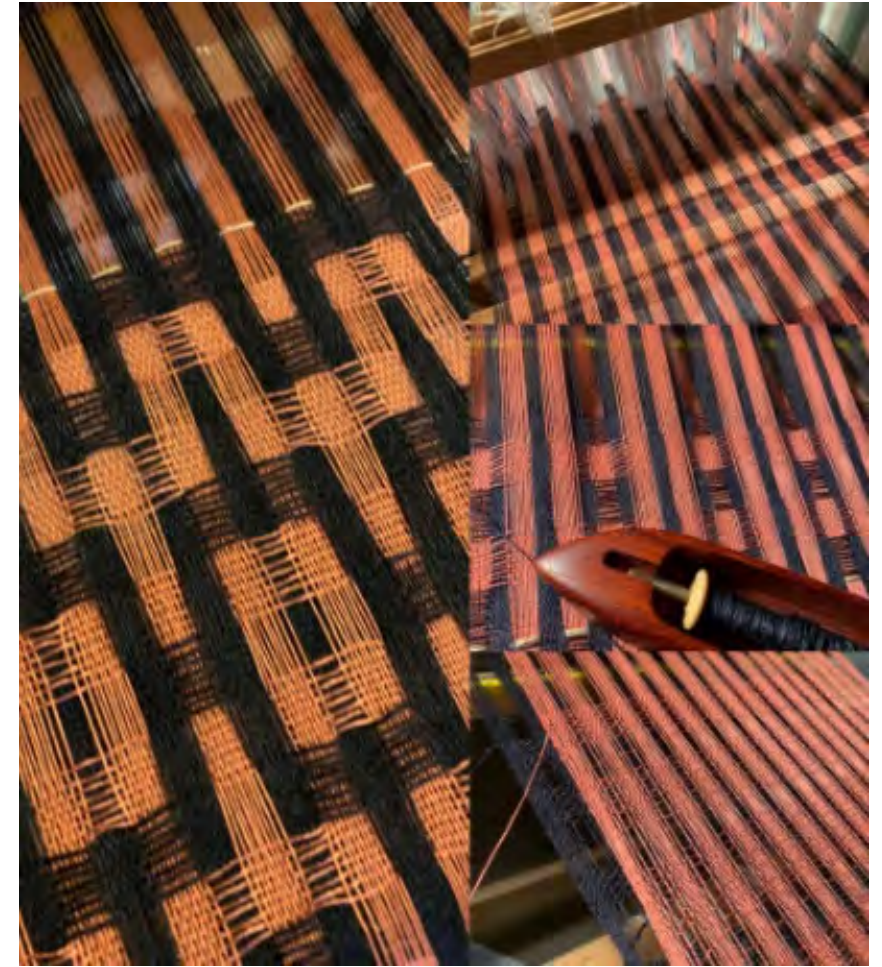
Samples from a Janney Simpson workshop on Deflected Double Weave



Woven



Washed



Lynne Cowe Falls

Deflected doubleweave

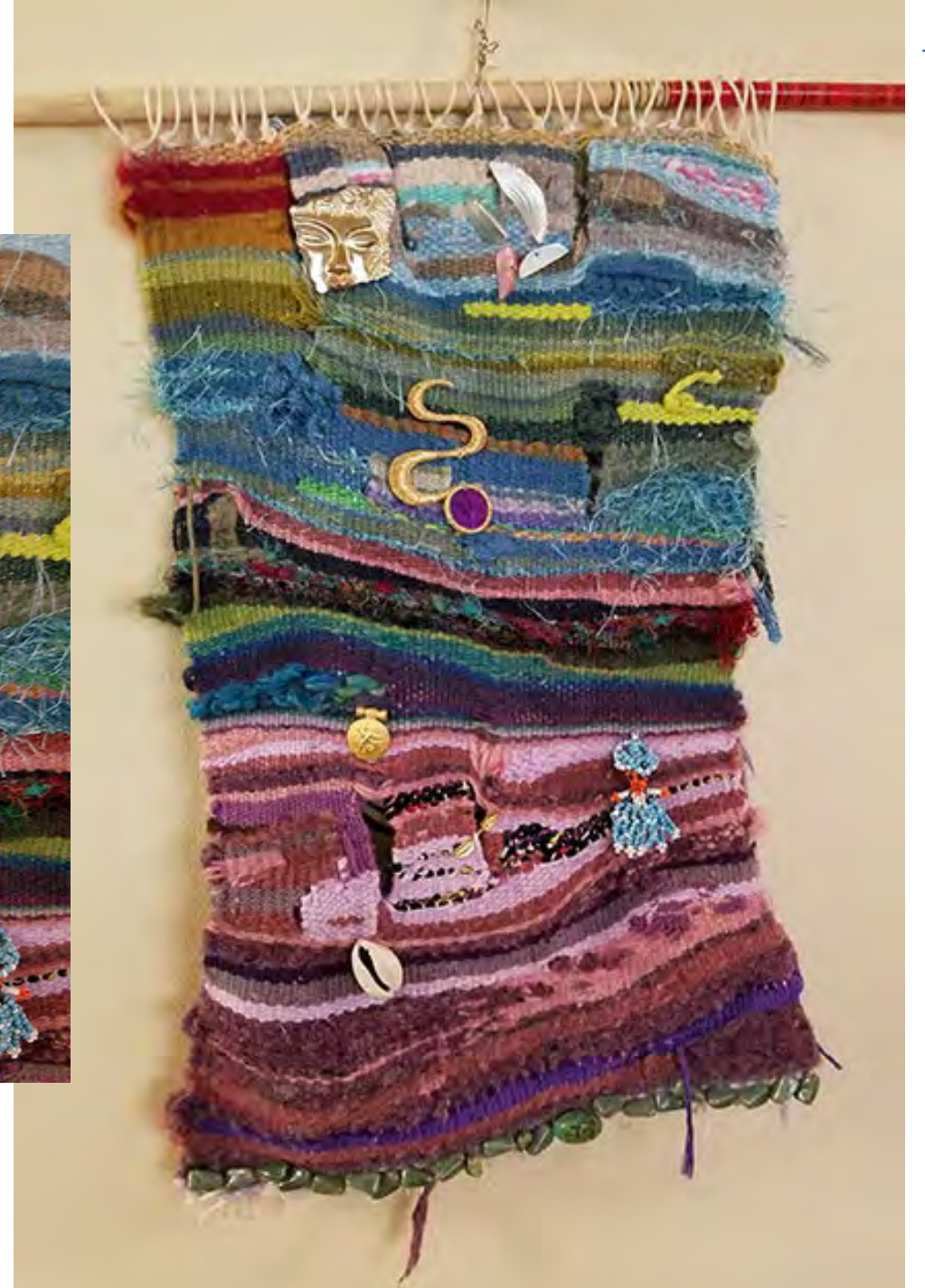
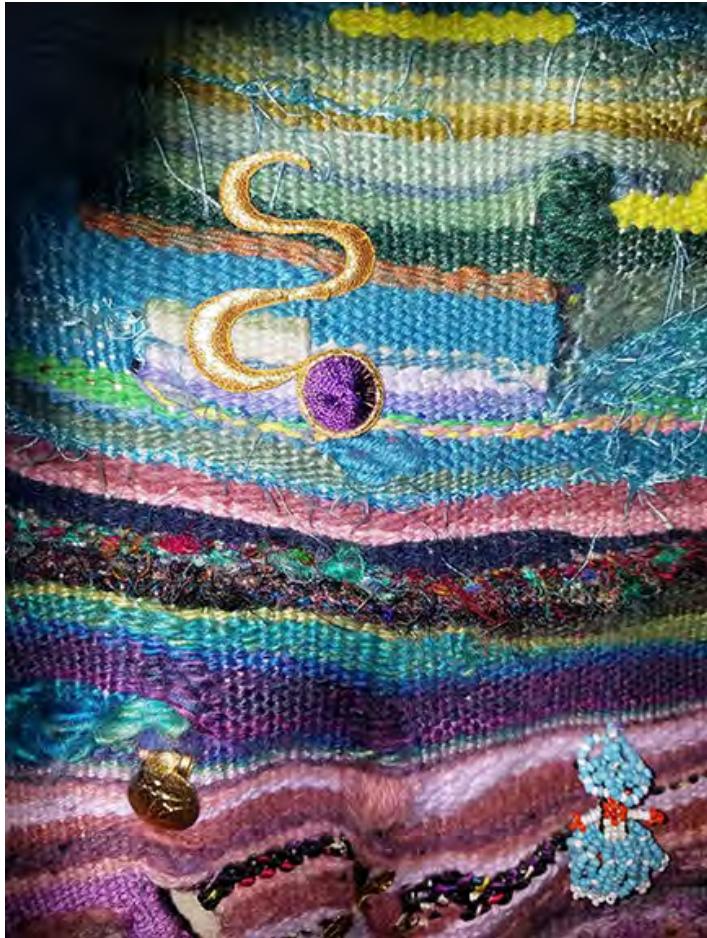
Zooey cottolin, 2 ply

8 shafts



Michele Burke

First tapestry project



Sally Orgren

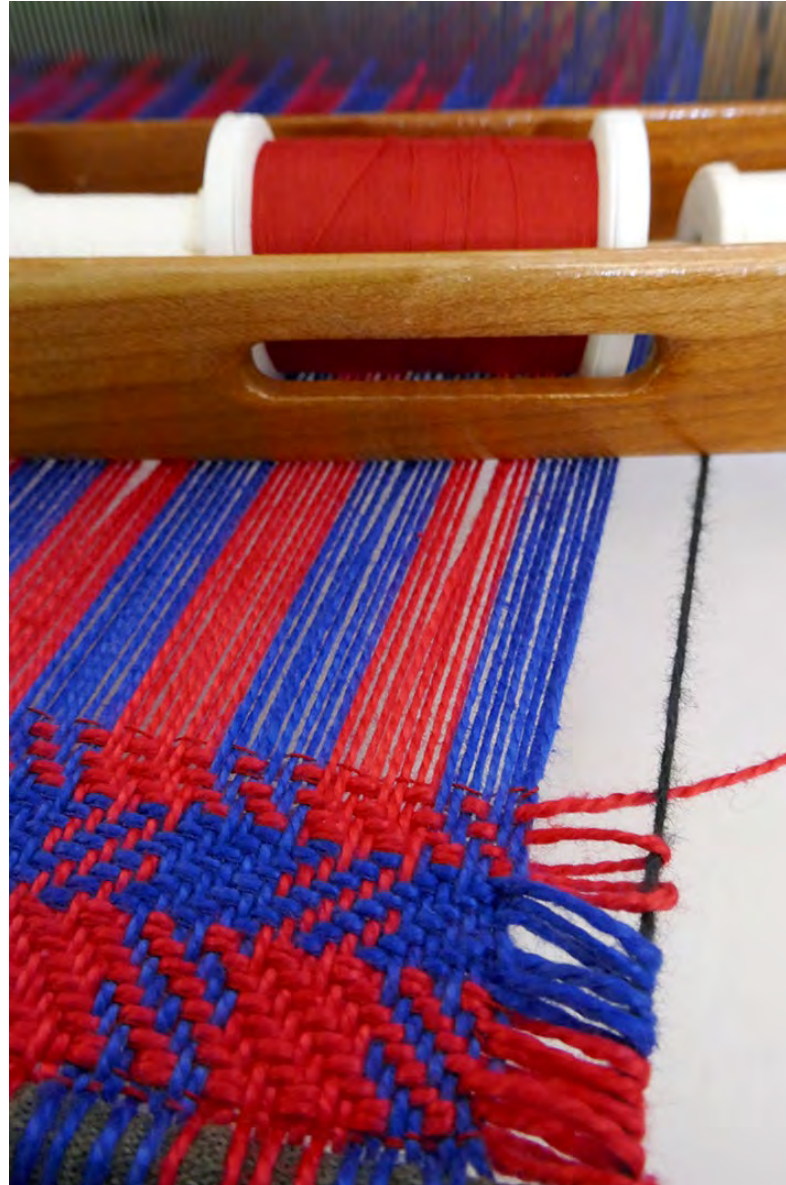
Sally is participating in the **Violet Protest**, a public effort to send 50 hand-made textile squares to each member of Congress in support of these core American values:

- Respect for the other
- Citizenship
- Compromise
- Country over party and corporate influence
- Courage
- Candor
- Compassion
- Creativity

<http://Violetprotest.com>

The 8 x 8" submissions are due Nov 15th, and must be composed of 50% blue and 50% red.

There is an exhibit planned for Phoenix, Arizona in 2021 to display the submissions before they will be distributed.



Sally Orgren



Sally's (borrowed) Macomber floor loom is threaded 8-shaft straight draw, alternating in red and blue stripes. Each treading creates a different pattern along the same warp.

A unique feature of Sally's project is she planned for 4 fringed edges, no hems. To accomplish this, she has floating selvages to bring the weft out beyond the warp's edge.

However, to secure the selvage and make sure she had an equal amount of fringe on each side to match that of the warp, she introduced a second shuttle with matching sewing thread.

The idea is like overshot: you have a pattern weft (5/2 cotton) and a tabby (sewing thread) that is nearly hidden. She is on her 6th pattern out of 10 total.



Tara Weinstein



Terry Henley



Terry Henley



Vicki Aspenberg

Rock Weaving

Size - 2"/4"

Warp - 12/6 cotton seine twine

Weft - wool and synthetic yarns

The technique is mostly pick and pick





Show & Tell

Sept 2020

CODE OF CONDUCT

Our guild offers a safe and welcoming environment to listen, learn, and share ideas. To this end, we ask participants to not operate a motor vehicle while attending our guild meetings and events remotely via Zoom.

Contributors

- Carol Steuer
- Carol Wood
- Charlene Marietti
- Hedy Lyles
- Katy Clements
- Kristin Bachmann
- Ria Koopmans
- Sally Orgren
- Stephanie Lyon
- Terry Henley

Charlene Marietti

Deflected Doubleweave Stole



Carol Wood

Commission: tallit in
plain weave with inlay,
12 epi, wool



Sally Orgren

- Franz Donat historic draft from Handweaving.net, woven for Complex Weaver's Early Weaving Books & Manuscripts 2020 sample exchange
- Fine stash wool, white warp and brown-grey weft, 28/2 (or finer), 28 epi.
- 11 shaft: nearly straight twill threading, and easy treadling (12 pattern treadles + 2 for tabby)



Stephanie Lyon

Sampling Jin

Project was to sample jin (turned taquete) 8-shaft draft based on article from MA2011 Handwoven.

Warp: rayon chenille in alternating strands of cream and blah variegated brown

Sett: original sett 30 epi adjusted to 24 epi

Wefts: 10/2 cotton, polyester thread, rayon chenille, 5/2 bamboo



Hedy Lyles

Deflected double weave scarves



Kristin Bachmann

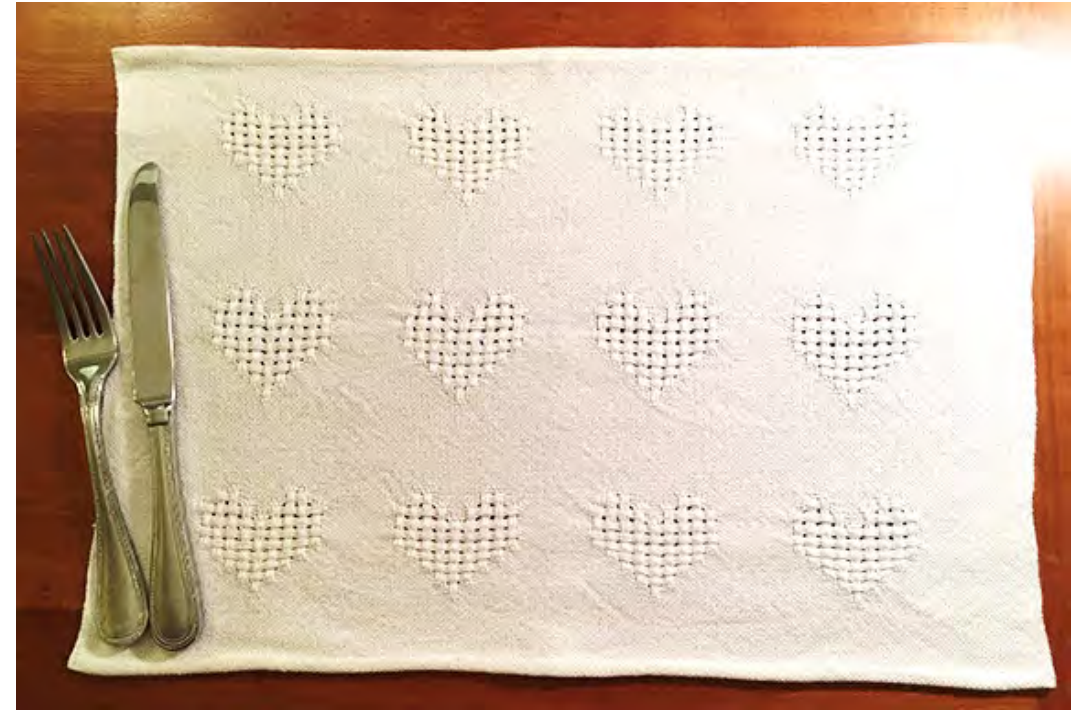
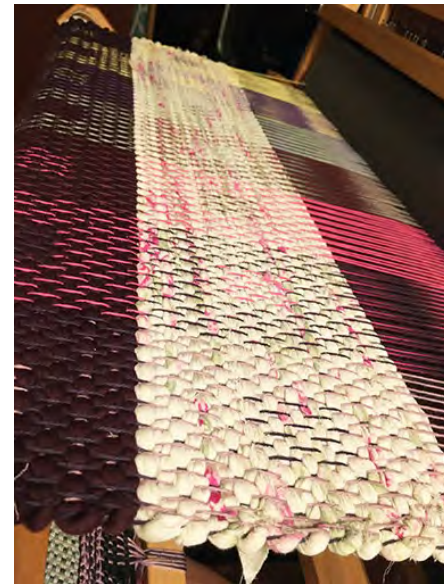
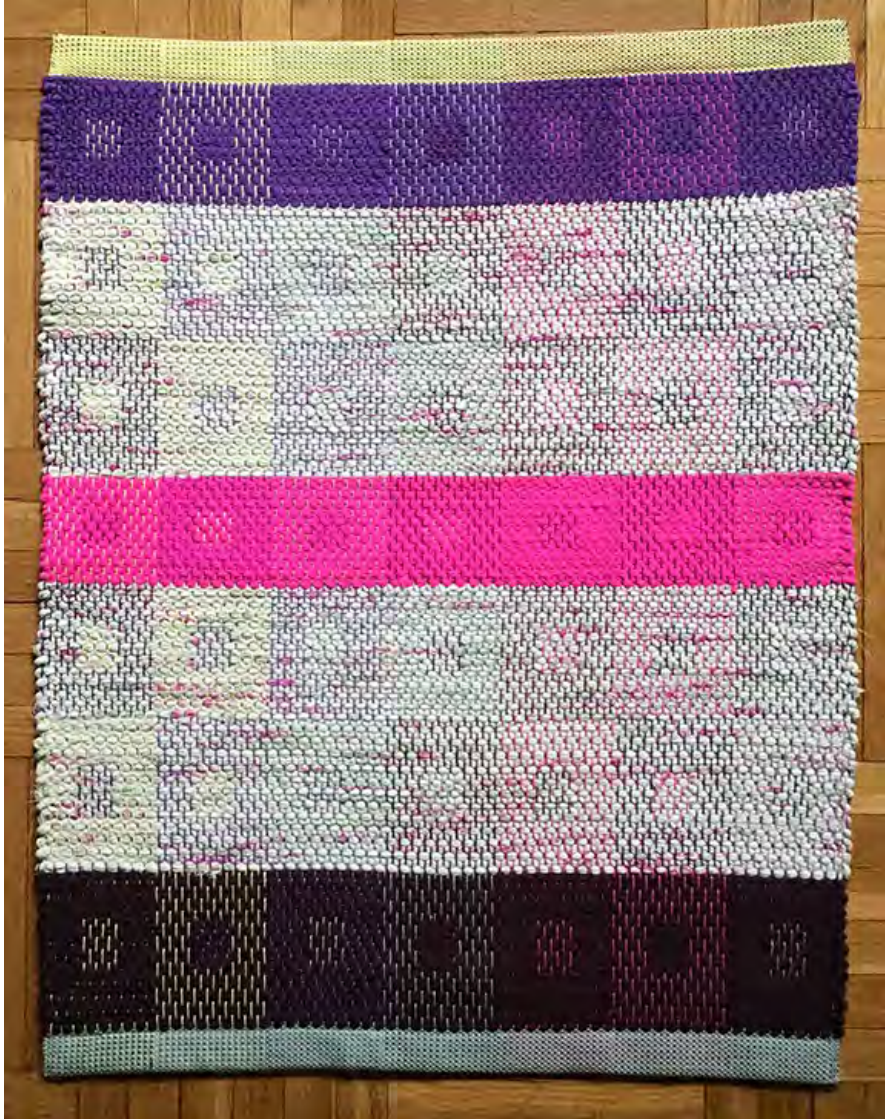
Cricket samplers



Doubleweave sampler



Katy Clements



Terry Henley

Handspun wool

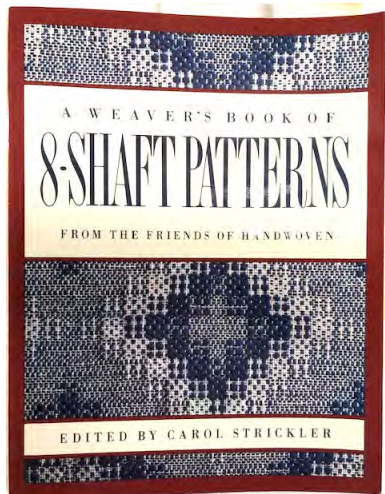


Ria Koopmans

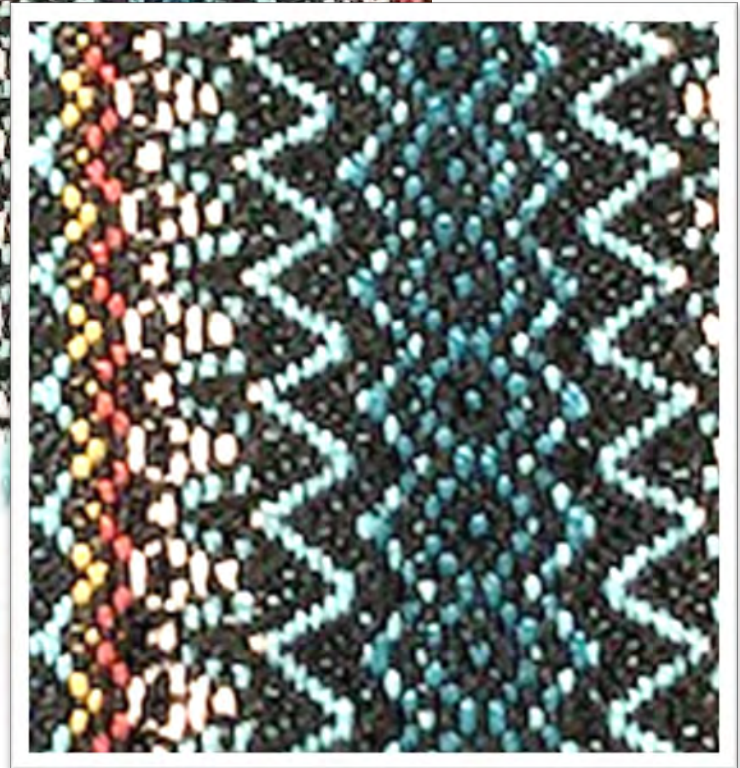


Carol Steuer

728



Facebook Group:
Strickler in Color





Show & Tell

Oct 2020

CODE OF CONDUCT

Our guild offers a safe and welcoming environment to listen, learn, and share ideas. To this end, we ask participants to not operate a motor vehicle while attending our guild meetings and events remotely via Zoom.

Contributors

- Carol Steuer
- Carol Wood
- Charlene Marietti
- Claudia Monnone
- Elizabeth Starčević
- Hedy Lyles
- Katy Clements
- Nancy Everham
- Ria Koopmans
- Sally Orgren
- Susan Weltman
- Terry Henley
- Vandana Jain

Claudia Monnone

Falling Apart at the Seams



Carol Wood

Doubleweave on 4 shafts.

Harrisville Shetland warp, stash one-ply tweed weft,
12 epi per layer, approx 74" x 90"



Elizabeth Starčević

My Cancer Time



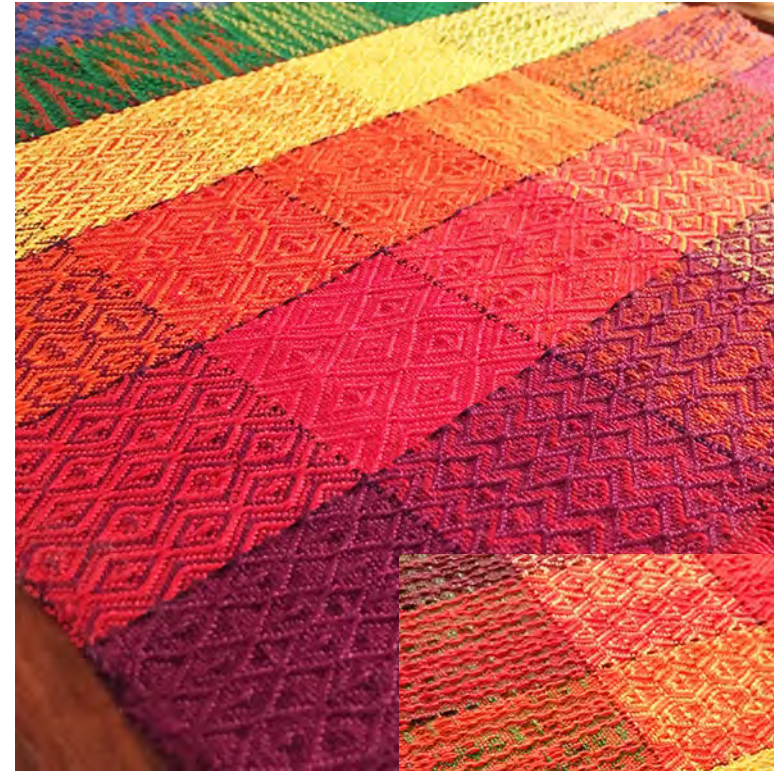
Hedy Lyles

Online class working with fine threads.

Warp is 20/2 cotton in light olive and medium gold. Weft is 2 different fine silks in textured olive green and tan tussah silk. Random sections of the weft include elastic silk and stainless steel silk.



Katy Clements



Nancy Everham



Sally Orgren

Baby blanket

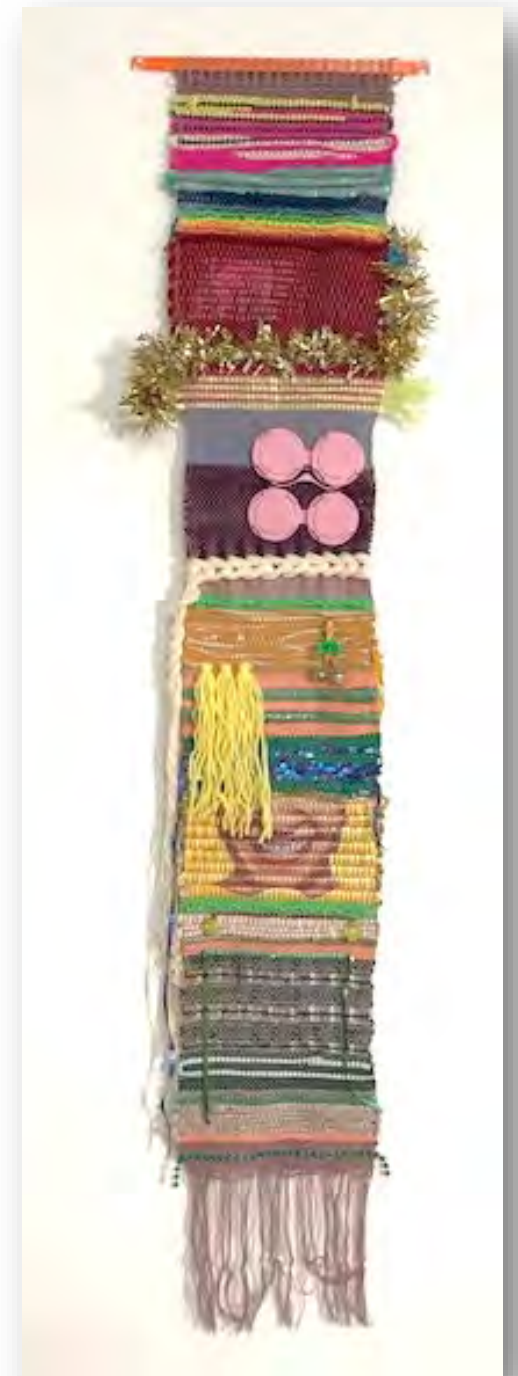


Susan Weltman

Deflected Doubleweave scarf

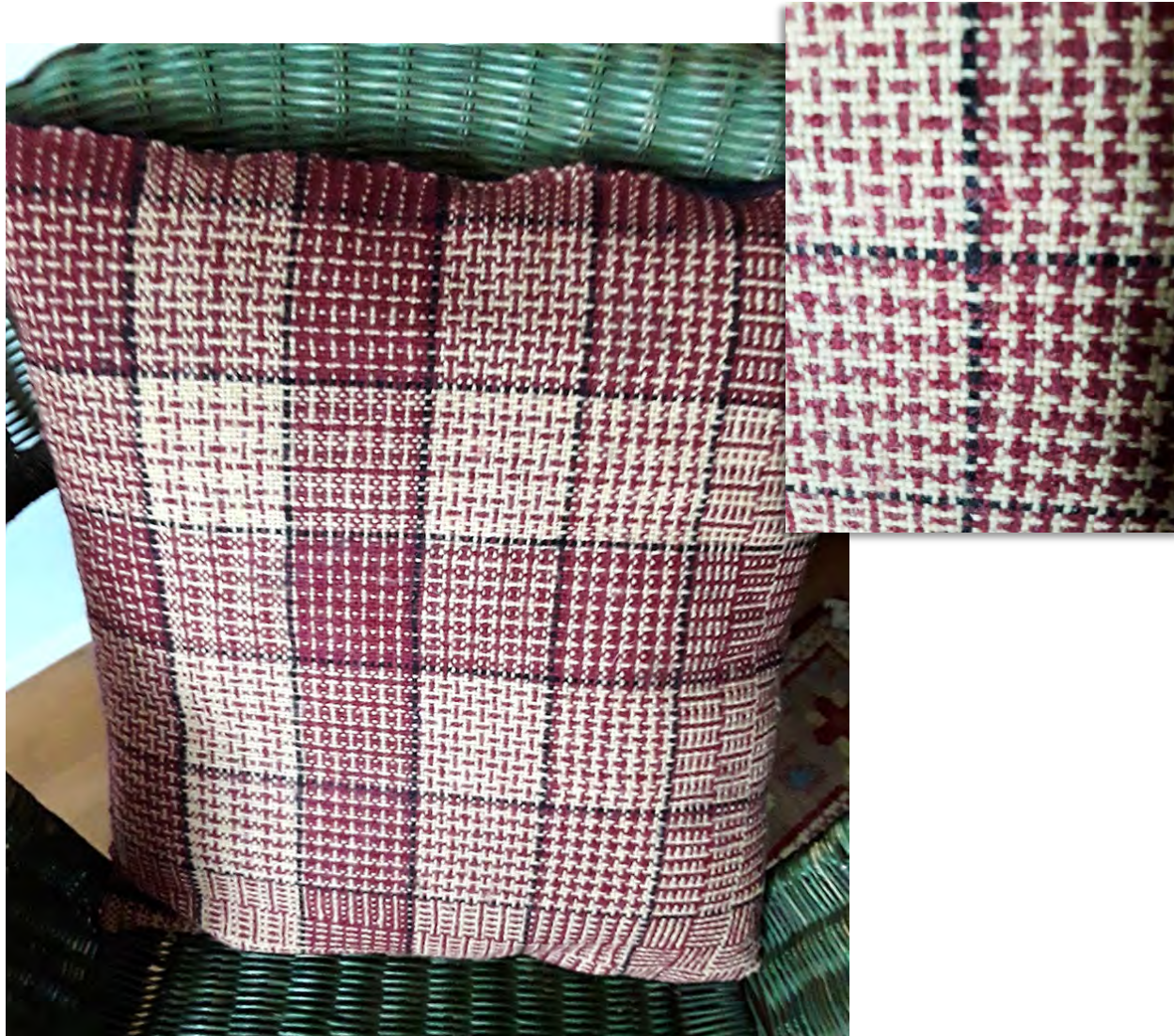


Vandana Jain



Ria Koopmans

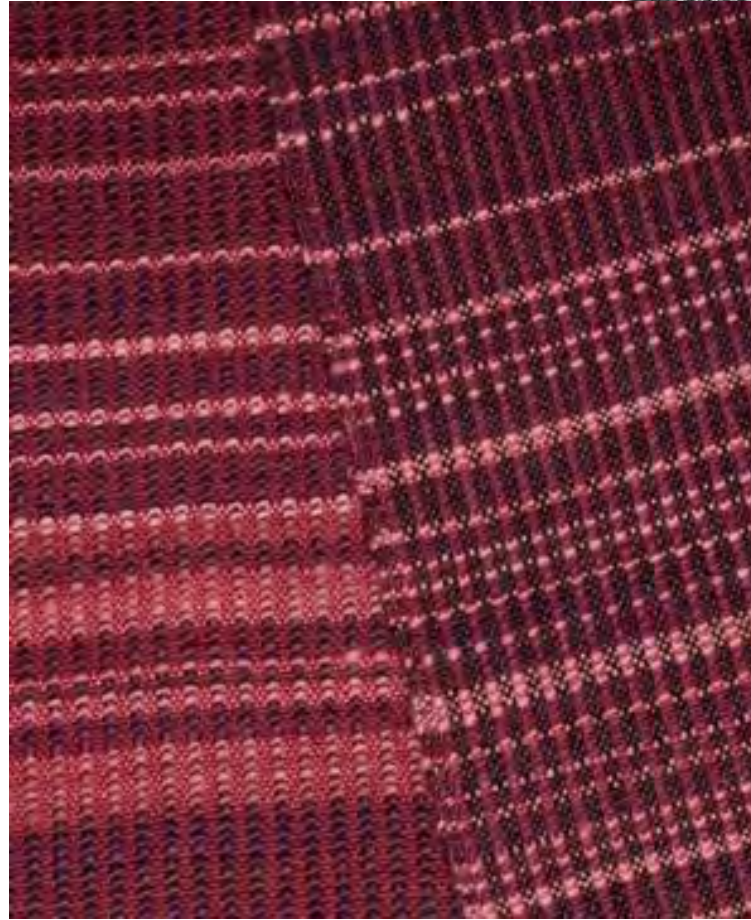
Designs based on Erica de Ruiter's *Weaving on 3-Shafts*



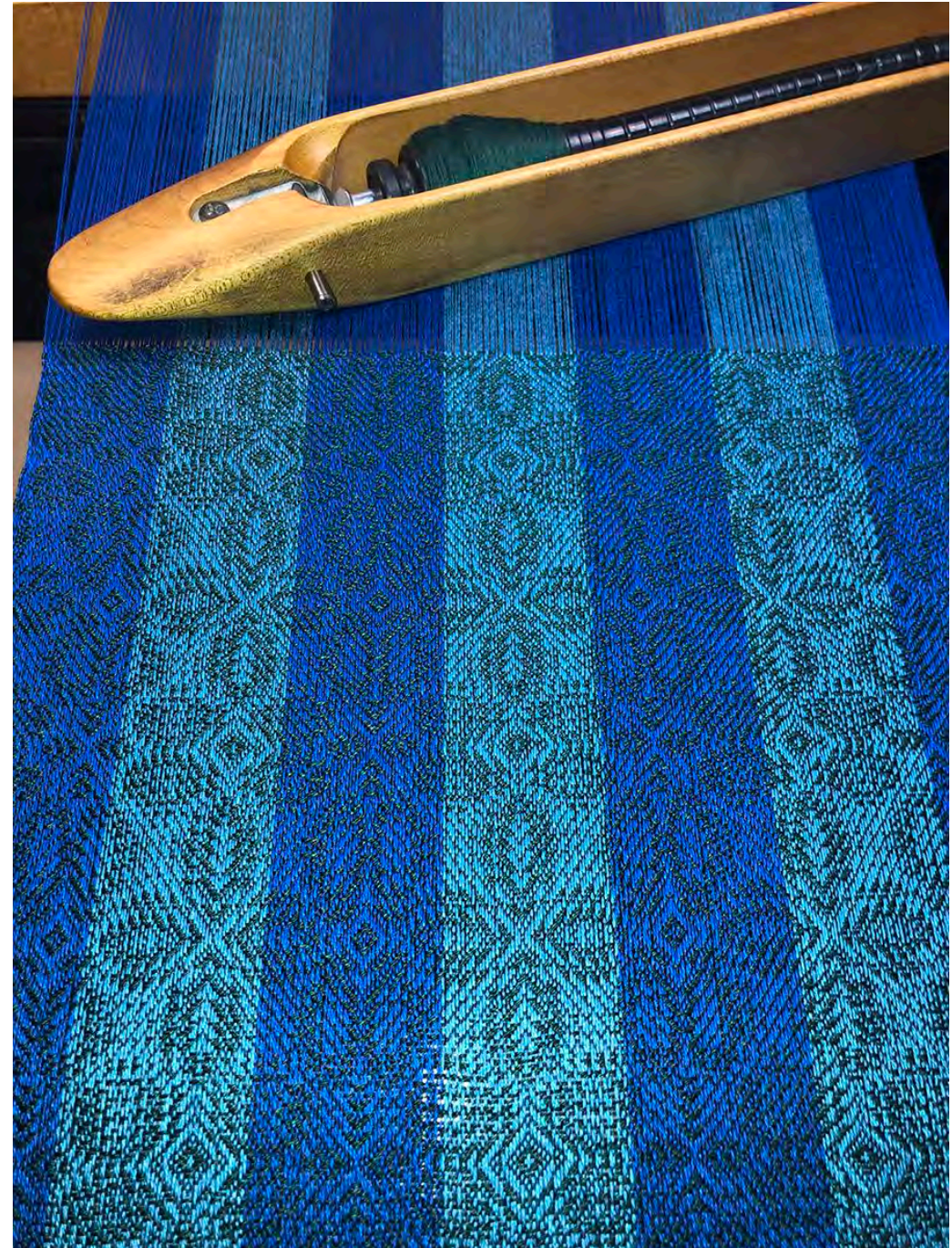
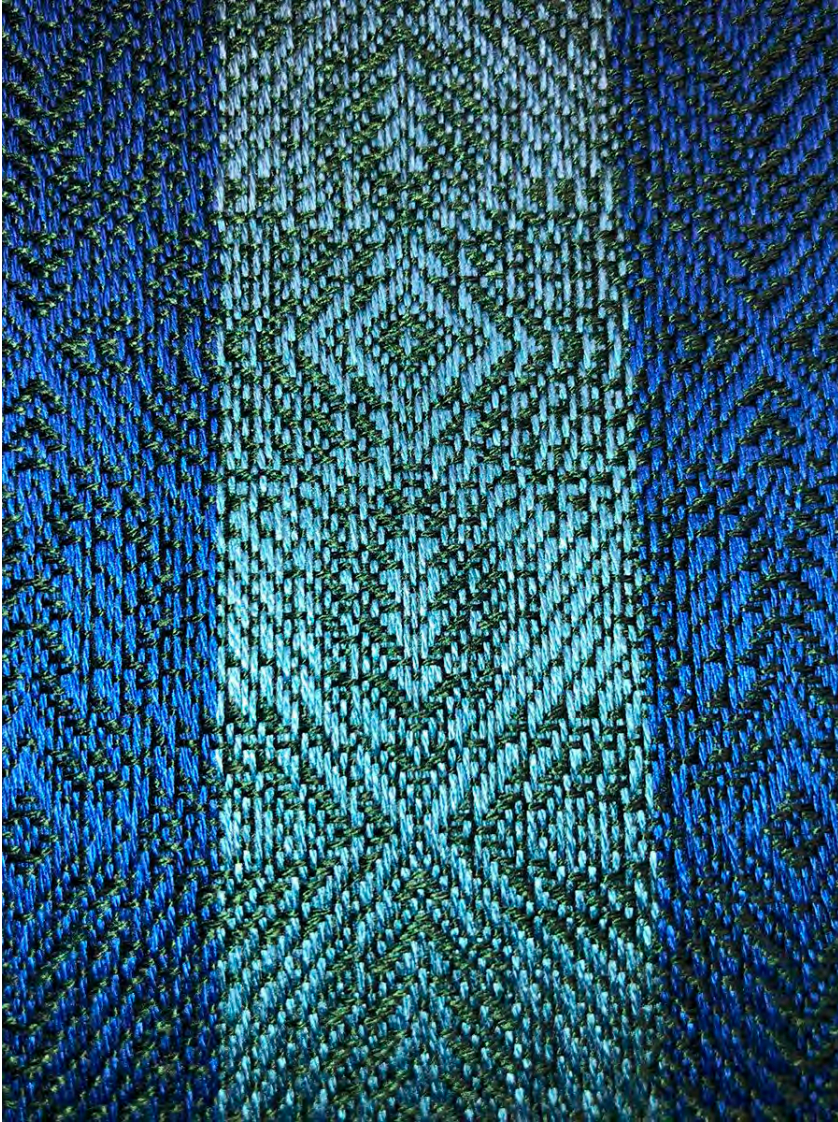
Above: Outside
Below: Inside



Charlene Marietti



Terry Henley



Carol Steuer

Alpaca scarf in 3-1 twill





Show & Tell

Dec 2020

CODE OF CONDUCT

Our guild offers a safe and welcoming environment to listen, learn, and share ideas. To this end, we ask participants to not operate a motor vehicle while attending our guild meetings and events remotely via Zoom.

Contributors

- Carol Steuer
- Peter Houts
- Sally Orgren
- Tara Weinstein

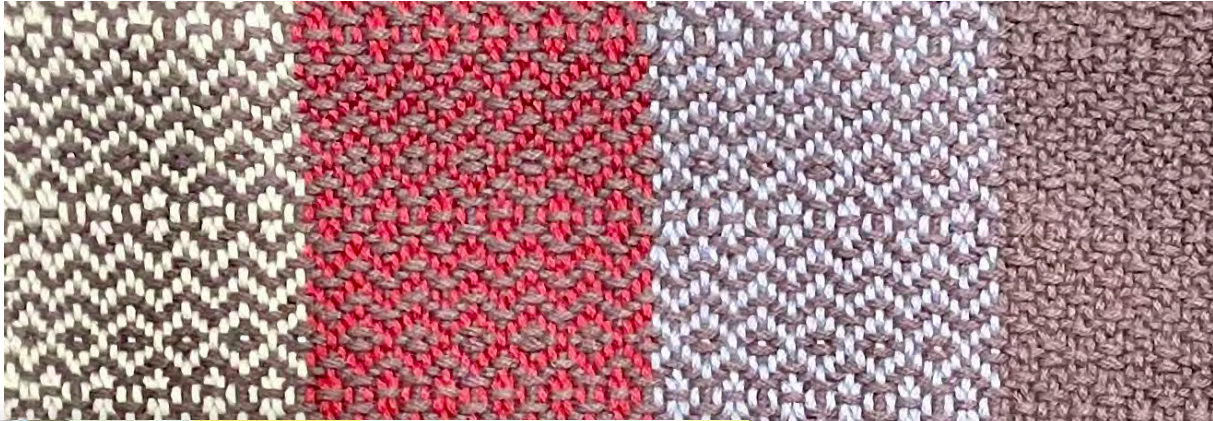
Sally Orgren

Quad Axial Weaving



Tara Weinstein

Rigid Heddle Towels



Peter Houts

Moorman technique
and transparency



Carol Steuer

Wedge Weave

