



# NEW YORK THREADS

The Newsletter of  
The New York Guild of Handweavers  
Box 1623, Madison Square Station, New York 10159-1623  
Web: [www.nyhandweavers.org](http://www.nyhandweavers.org) e-mail: [info@nyhandweavers.org](mailto:info@nyhandweavers.org)

Meeting at the School of Visual Arts  
214 East 21st Street, Room 703A  
Social Hour at Noon  
Program at 1:00 PM

**March 2016**

March 19, 2016, 1:00 PM-4:00 PM

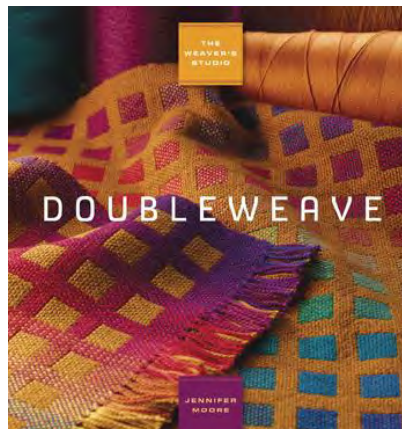
## Doubleweave Workshop



How did my 40" wide loom weave a twin size bed blanket? How did I make padded potholders on a 4-shaft loom?

Join us in exploring the basics of four shaft doubleweave with Jennifer Moore's video presentation. Learn to weave separate layers and to interchange those layers, weave seamless double width fabric, weave a tube or several tubes and learn how to handle your shuttles logically and easily while you weave.

You don't need to bring your loom. Pre-warped looms, yarn, and shuttles are provided. Several board members will be there to answer questions, trouble shoot, and provide helpful tips.



## MUSEUMS AND EXHIBITIONS

### Metropolitan Museum

1000 Fifth Avenue, NY 10028

212-535-7710 <http://metmuseum.org>

*Chinese Textiles: Ten Centuries of Masterpieces from the Met Collection.* (through June 19, 2016). The installation explores the cultural importance of silk in China, and showcases the most important and unusual textiles from the Museum's collection, including rare pieces from as far back as the Tang Dynasty (618-906).



*Vigée Le Brun: Woman Artist in Revolutionary France.* (through May 15, 2016). Though not strictly a fiber art exhibit, it is highly recommended for the masterful depiction of the drape, structure and color of the elaborate gowns and other clothes.



### Kirkland Art Center

9 ½ East Park Row

Clinton, NY 13323

315-853-8871

<http://www.kacny.org>

Now showing: *Blended Threads*, a national survey of fiber based artists featuring Jane Bartlett, Betty Busby, Anne M. Fisher, Valerie Goodwin, Susan Martin Maffei, and Nelda Warkentin. The exhibition will continue through March 30, 2016.



## EVENTS

### Hallockville Museum Farm

6038 Sound Avenue

Riverhead, NY 11901

<http://www.hallockville.com>



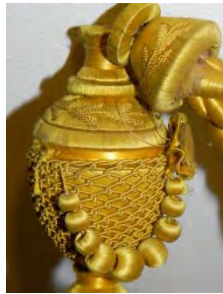
*Long Island Fleece and Fiber Fair.*

Spring is just around the corner, and that means that the

annual fleece and fiber fair at Hallockville Museum Farm is approaching again. This year it will be

held on May 14-15, 2016. Open hours are 10:00 AM-4:00 PM. The program is filled with on-going demonstrations and activities, and there will be plenty of vendors selling hand-crafted yarns as well as fiber arts supplies and finished goods.

**Hyde Hall in Glimmerglass State Park**  
Springfield, NY 13333



*Textile History Forum at Hyde Hall.*

A hands-on forum to identify and date the surviving drapery fabrics at Hyde Hall. It is an unprecedented opportunity for anyone interested in historic fabrics to work with experts and help catalog this amazing collection of early 19th century fabrics and trims. April 29-May 1, 2016. The registration form can be found [online](#). More information is available from Rabbit Goody, Thistle Hill Weavers at [rabbitgoodythw@gmail.com](mailto:rabbitgoodythw@gmail.com), or by phone at 518-284-2729.

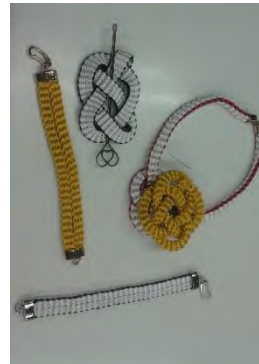
## PROGRAM REPORT

On February 27, we had our annual Show-and-Tell program again, and it was a great success. Members brought a great variety of handwovens and other fiber products and stories to share. Since a picture is worth a thousand words, here is a selection of what was

presented. Let the images do the talking.



*Mary-computer manipulated weaving (Photo: Tina Bliss)*



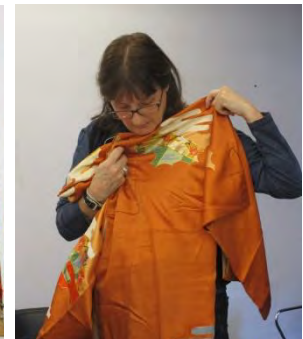
*Charlene-Kumihimo*



*Pat-mittens*



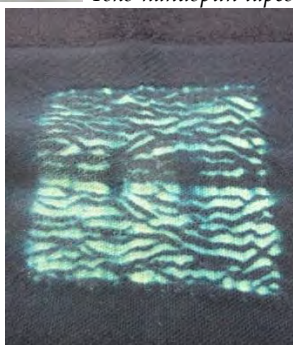
*Anna-FIT class sample*



*Valerie-Yokodana.com kimono*



*Yoko-handspun tapestry*



*Carol-shibori dyeing*

harnesses, a 48" weaving width, overhead beater with one-box fly shuttle, two warp beams, two breast beams, and all the features common to AVL, plus accessories (including a bench). Excellent condition (owner is downsizing his studio). Asking price \$5,000. Pick-up from Easton, PA only. Contact the seller, Brother Mark at Saint Francis Retreat House and Friary, at [mligett@gmail.com](mailto:mligett@gmail.com).



*Carie-echo weave*



*Scarves: Terry (left; photo: Tina Bliss) and Ronnie (right)*

## PROGRAMS 2015-2016

September 26, 2015 Deb Irmiter, **Blended Drafts**

October 31, 2015 Daryl Lancaster, **Photographing Your Work**

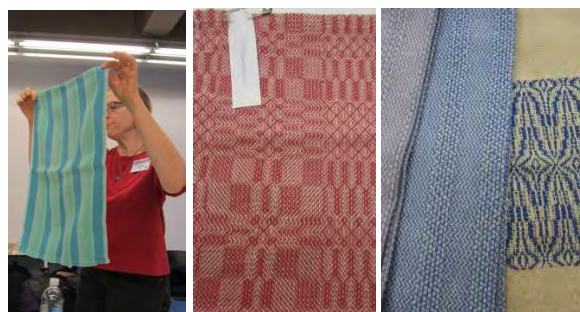
December 5, 2015 **Holiday Party**

January 30, 2016 Peggy Hart, **Designing Blankets** (half-day workshop)

February 27, 2016 **Show and Tell**

March 19, 2016 **Doubleweave** (DVD half-day workshop)

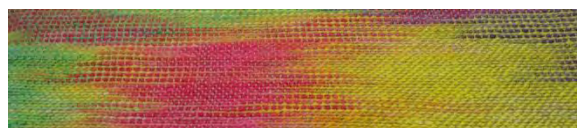
April 30, 2016 Becky Ashenden, **Nordic Journey**



*Towels: l-r, Carie, Joy, Judith*

## CLASSIFIEDS

For sale: Recent model AVL mechanical doobby loom. A-series loom with 16



*Judith-painted warp*



*Carol S-tapestry inserts*

## **OFFICERS, BOARD MEMBERS & COMMITTEE MEMBERS**

**General info:** [info@nyhandweavers.org](mailto:info@nyhandweavers.org)

**Web Master:**

[webmaster@nyhandweavers.org](mailto:webmaster@nyhandweavers.org)

**Membership:** Tina Bliss,

[membership@nyhandweavers.org](mailto:membership@nyhandweavers.org)

**Librarian:** Carie Kramer,

[librarian@nyhandweavers.org](mailto:librarian@nyhandweavers.org)

**President:** Gail Gondek,

[president@nyhandweavers.org](mailto:president@nyhandweavers.org)

**Vice-President:** Soraya Shah,

[vp@nyhandweavers.org](mailto:vp@nyhandweavers.org)

**Secretary:** Jonathan Miller,

[secretary@nyhandweavers.org](mailto:secretary@nyhandweavers.org)

**Treasurer:** Carol Steuer,

[treasurer@nyhandweavers.org](mailto:treasurer@nyhandweavers.org)

**Programs:** Carie Kramer,

[programs@nyhandweavers.org](mailto:programs@nyhandweavers.org)

**Special Events Chair:** Position currently vacant

**Publicity:** Linda Sax,

[publicity@nyhandweavers.org](mailto:publicity@nyhandweavers.org)

**Newsletter Distribution/Hospitality:** Bea Aubrey

**Newsletter Editor:** Ria Koopmans,

[editor@nyhandweavers.org](mailto:editor@nyhandweavers.org)

Contact any of the above, and more, via the contact page on our website:

<http://nyhandweavers.org/contact>



*Gail-bead weaving (Photo: Gail Gondek)*

**The closing date for the April issue is April 15, 2016.** Please send your submissions to [the editor](#)



*Darby-weaving over shaped wood (photo: Tina Bliss)*